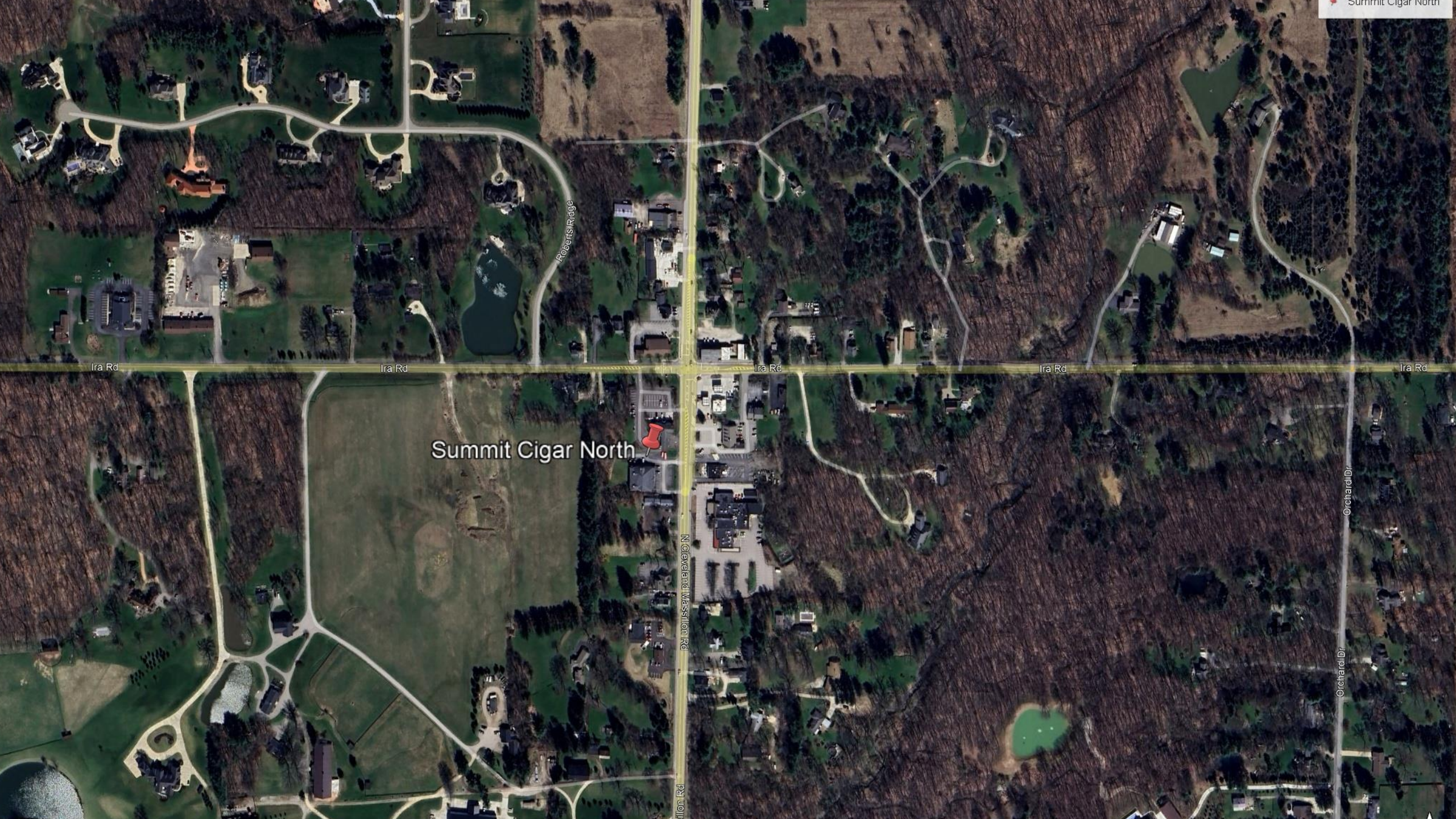


APPEARANCE REVIEW COMMISSION

November 3, 2025





Summit Cigar North

Ira Rd

Ira Rd

Ira Rd

Ira Rd

Ira Rd

Roberts Ridge

N Cleveland Massillon Rd

p

Orchard Dr

Orchard Dr

1. COVER
2. EXISTING SITE PLAN / SURVEY
3. PROPOSED SITE PLAN
4. SITE /PROJECT INFORMATION
5. PRELIMINARY FLOOR PLAN /USES
6. EXISTING ENTRY
7. PROPOSED ENTRY
8. EXISTING SOUTH EAST CORNER
9. PROPOSED SOUTH EAST CORNER
10. EXISTING NORTH EAST CORNER
11. PROPOSED NORTH EAST CORNER
12. EXISTING NORTH SIDE
13. PROPOSED NORTH SIDE
14. EXISTING SOUTH SIDE
15. PROPOSED SOUTH SIDE
16. EXISTING SOUTH WEST CORNER
17. PROPOSED SOUTH WEST CORNER
18. NIGHT TIME IMAGES
19. NIGHT TIME IMAGES
20. SITE PHOTO METRICS
21. MATERIAL SELECTIONS

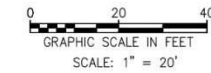


Summit Cigar North - 1930 North Cleveland Massillon Road

SITE PLAN
FOR
1930 CLEVELAND MASSILLON ROAD

KNOWN AS BEING A PART OF ORIGINAL LOT NO. 25

TOWNSHIP OF BATH
COUNTY OF SUMMIT - STATE OF OHIO
FEBRUARY 17, 2025

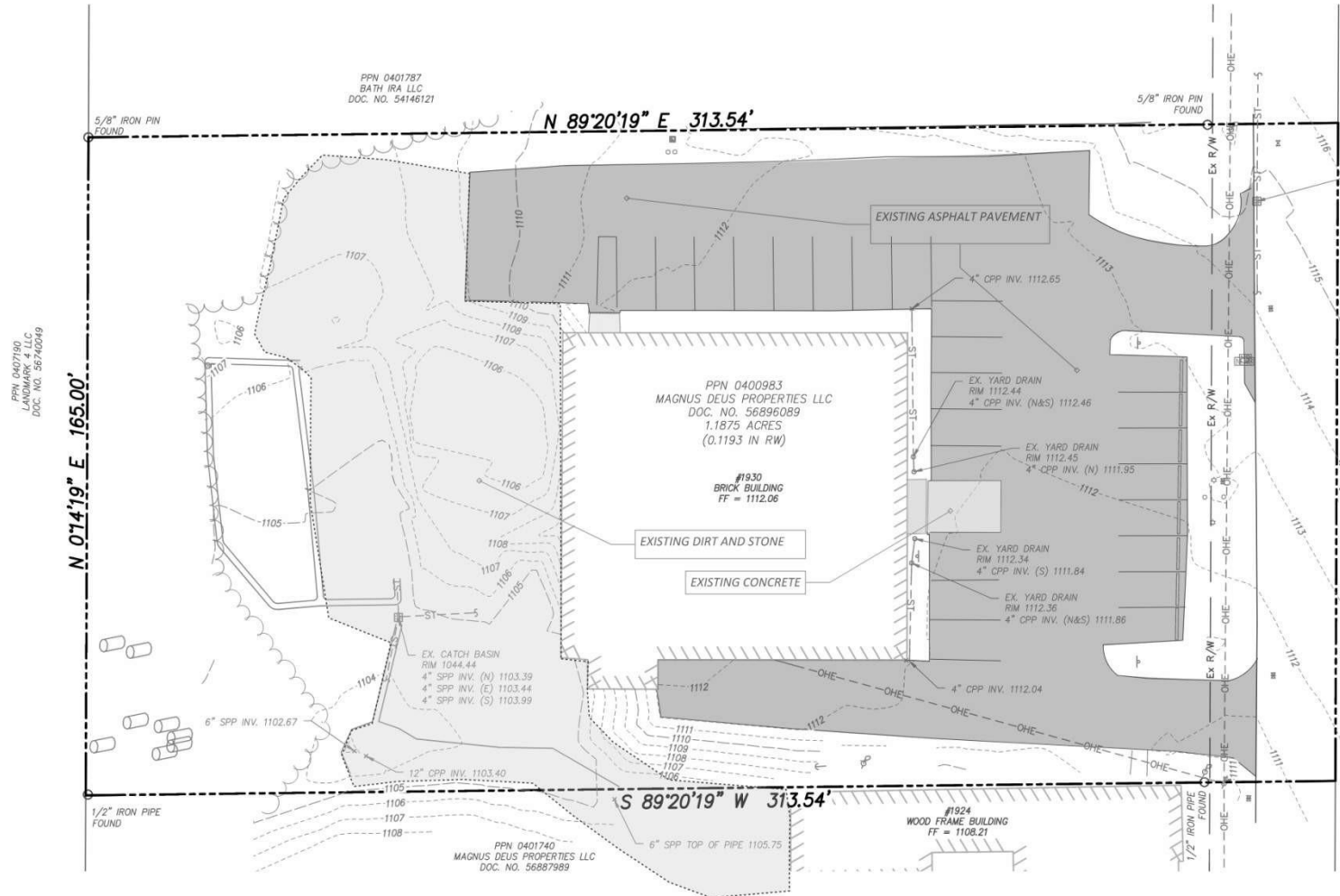


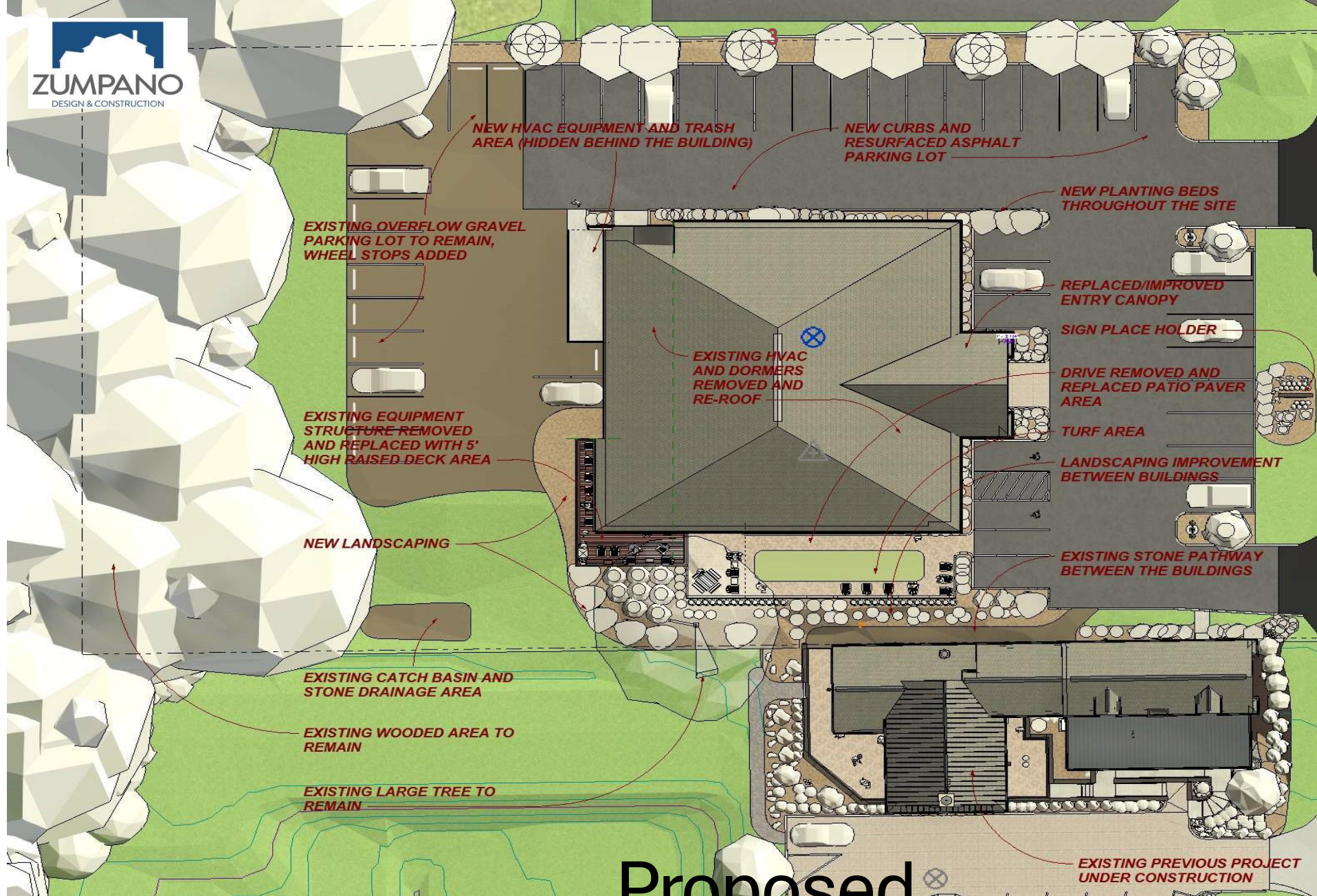
BASIS OF BEARINGS

BEARINGS ARE BASED ON GRID NORTH PER THE OHIO STATE PLANE COORDINATES SYSTEM, NORTH ZONE (3401), NAD83 (2011), 2010.0 EPOCH, AS DERIVED FROM GNSS OBSERVATIONS PER THE O.D.O.T. RTN (REAL-TIME-NETWORK).

LEGEND

- IRON PIN OR PIPE FOUND AS DESCRIBED
- ⊕ POWER POLE
- ▣ CATCH BASIN
- ⊗ GAS VALVE
- ⊕ SEPTIC
- ST— STORM SEWER

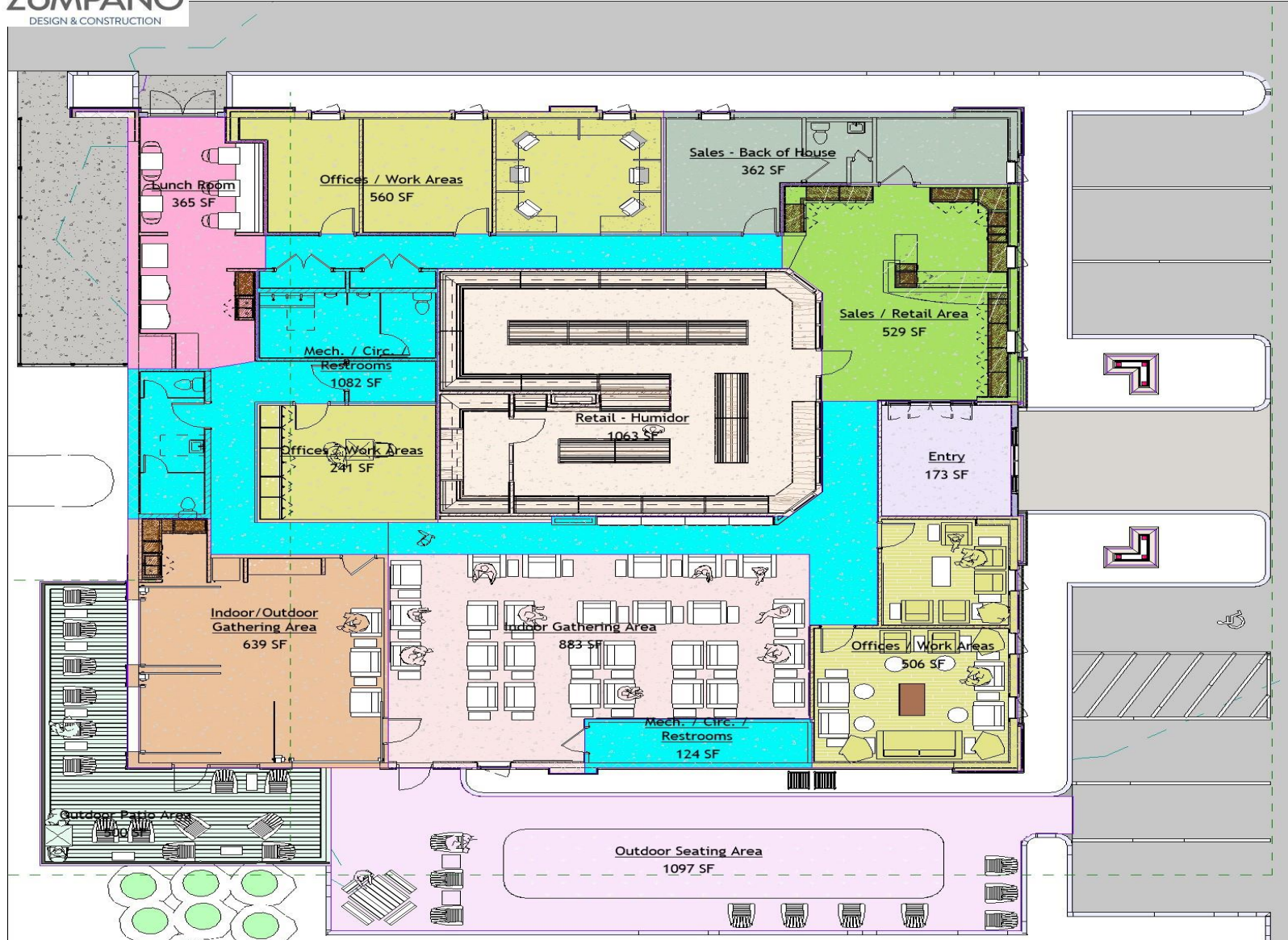




Proposed Site Plan

Site & Building - Pre and Post Comparisons					
Site Summary					
	Existing	Proposed	Delta		
Hard Surface Area - Non Permeable	15,345	14,248	-1097	-7%	
Permeable Pavers & Turf	-	1,097	1097		
Total	15,345	15,345			
Parking Spots	23	30	7	30%	
ADA Parking Spots	1	2	1	100%	
Gravel Area Parking	18	14	-4	-22%	
Total	42	46	4	10%	
Building Summary					
Building Area	6,673	6,525	-148	-2%	
Patio Area	-	500			
Shingled Roof Area	7,945	7,693	-252	-3%	
Canopy Areas (no walls)	92	325	233	253%	
Amount of building with Exposed Shingles	8,037	8,018	-19	0%	
Building Use					
Business Use & Back of House	5,905	3,197	-2708	-46%	
Mercantile	103	1,954	1851	1797%	
Storage	665	-	-665	-100%	
Assembly - Classified as B	0	1,522	1522		
Total	6,673	6,673	0	0%	
Plumbing Fixures					
Mens	Lav	W.C.	Urinals	Sinks	Mop
Previous	1	1	0	1	1
Proposed	3	2	2	2	1
Womens					
Previous	1	1			
Proposed	1	2			
Unisex					
Previous	2	2			
Proposed	0	0			
Totals					
Previous	4	4	0	1	1
Proposed	4	4	2	2	1

Building/Project Area Summary			
Indoor	Building Common Area	173	Entry
		365	Lunch Room
		124	Mech. / Circ. / Restrooms
		1082	Mech. / Circ. / Restrooms
	Subtotal	1743	
	Gathering Areas	883	Indoor Gathering Area
		639	Indoor/Outdoor Gathering Area
	Subtotal	1522	
	Office Area	560	Offices / Work Areas
		506	Offices / Work Areas
		241	Offices / Work Areas
	Subtotal	1306	
	Store Area	1063	Retail - Humidor
		362	Sales - Back of House
529		Sales / Retail Area	
Subtotal	1954		
Total Inside (Under roof)	6525		
Outdoor	Gathering Areas	500	Outdoor Patio Area
	Total Outside	1097	Outdoor Seating Area
Total Project S.F.	8122		



Building Use Areas

- Entry
- Indoor Gathering Area
- Indoor/Outdoor Gathering Area
- Lunch Room
- Mech. / Circ. / Restrooms
- Offices / Work Areas
- Outdoor Patio Area
- Outdoor Seating Area
- Retail - Humidor
- Sales - Back of House
- Sales / Retail Area

Proposed Plan / Use



Existing Front Entry



New Entry Concept



Existing South East Corner



Proposed South East



Existing North East Corner



North East Perspective



North



North Side Upgrades



Existing
South



Proposed South Side



Existing South West



Proposed South West



New Entry -
Night

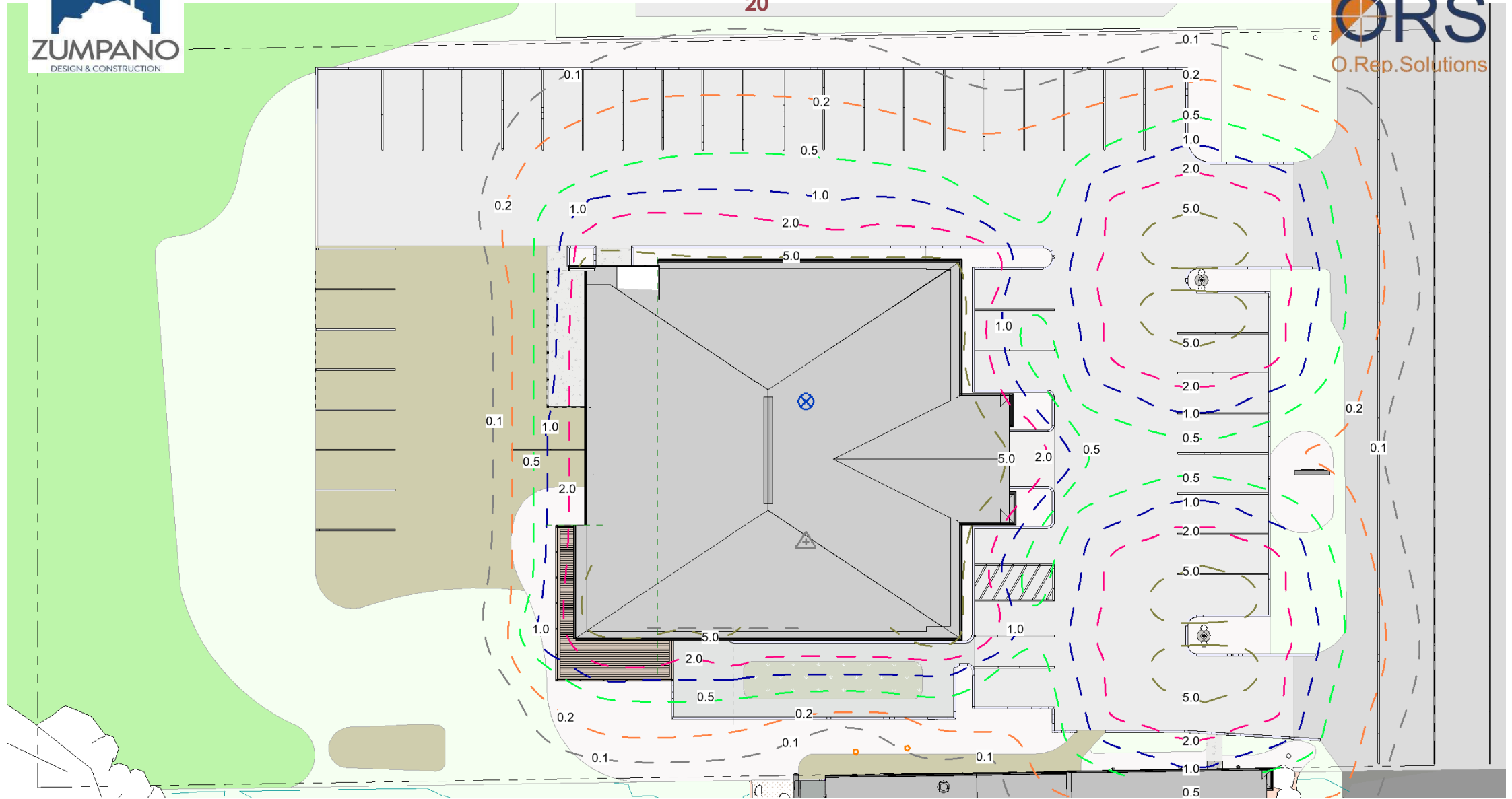


19



Additional Night Images

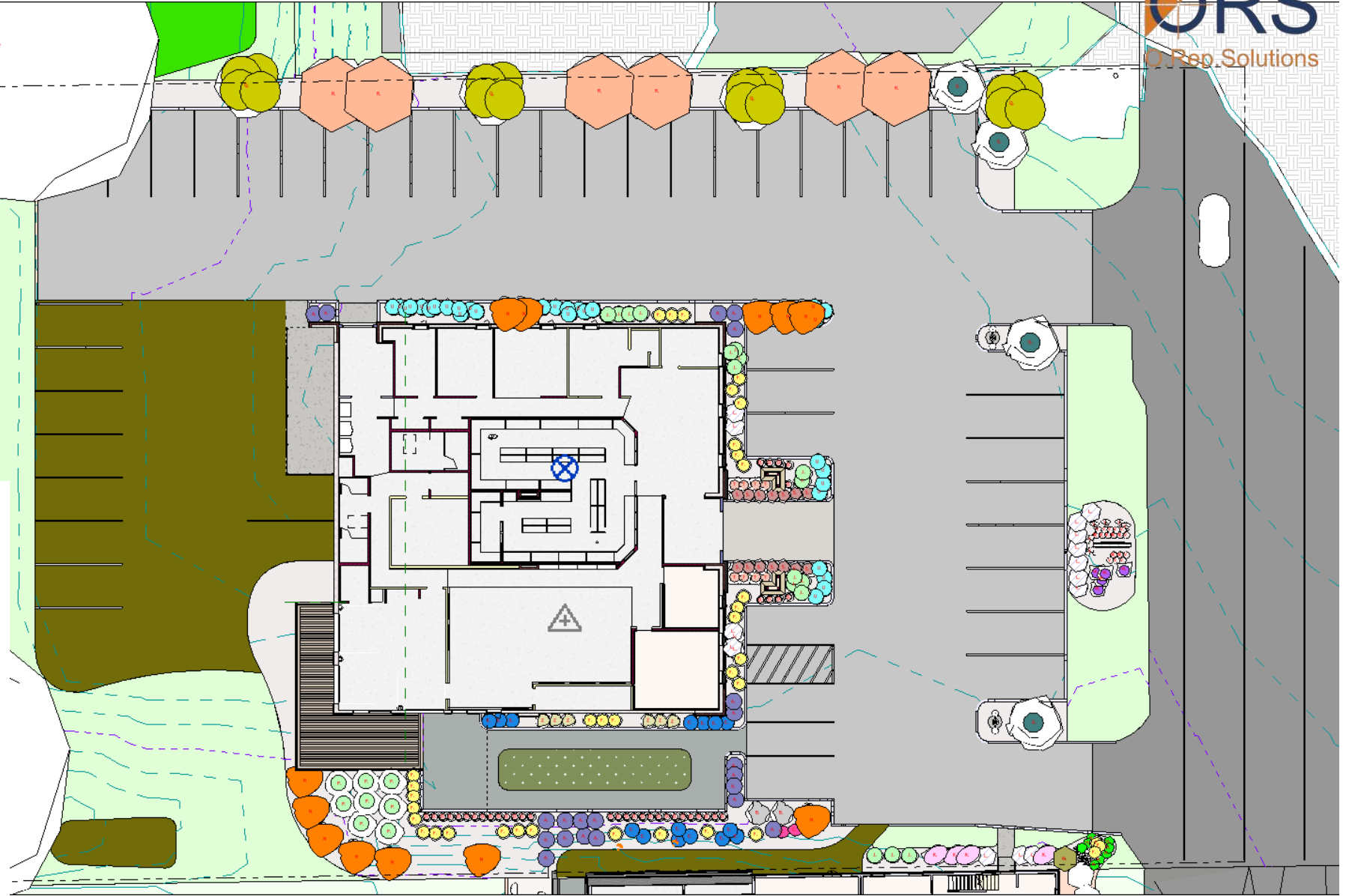




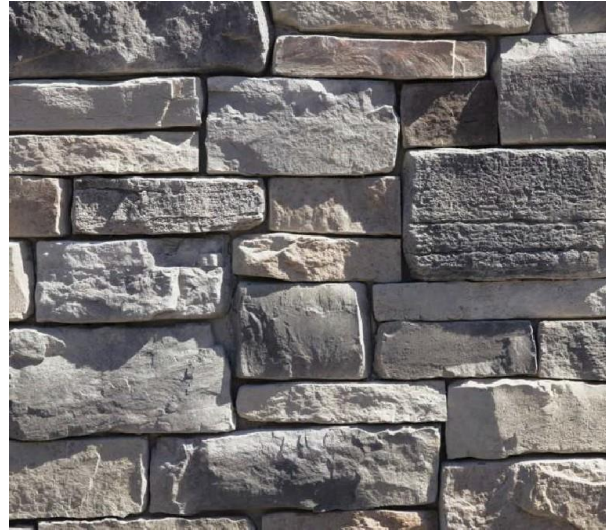
Lighting Photometrics

Planting Schedule

- A. Dwarf Evergreen or Similar
- B. Low Height (3') Ornamental Flowering Bush
- C. Ornamental Grass
- D. (4') Ornamental Flowering Bush
- E. Bloody Cranesbill Perennial or Similar
- F. Feather Reed Ornamental Grass or similar
- G. Royal Raindrop Crabapple or Similar
- H. Burning Bush / Firebush or Similar
- J. Rose of Sharon or Similar
- K. Sodom's Apple or similar
- L. Low Height (3') Ornamental Flowering Bush
- M. Dwarf Fir or Similar
- N. 4-5' Japanese Maple Red Dragon
- P. Rose of Sharon (large) or Similar
- Q. Ivory Silk Lalaac Tree 2" or Similar
- R. Yoshino Cherry or Similar
- S. Lavender or Similar
- T. St. John's Wart or Similar
- U. Iris Versicolor or Similar
- V. Lavender cotton or Similar
- W. Tulips or Similar
- X. Stones
- Y. Stones
- Z. False Blue Indigo Perennials or similar



Landscape Plan



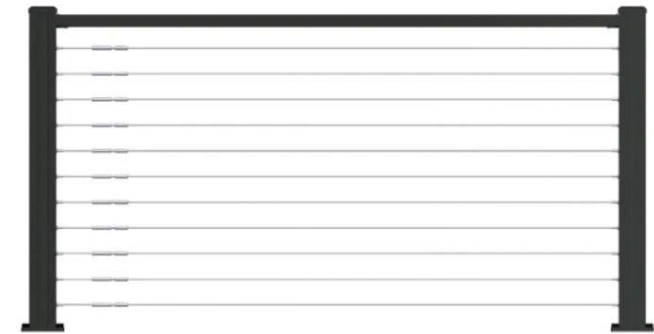
DUTCH QUALITY - WEATHER LEDGE -
ELKWOOD CULTURED STONE



COMPOSITE DECKING - TRANSCEND - TIKI TORCH



CERTAINTIED MORIE BLACK
SHINGLES



COMPOSITE DECKING - RAILINGS

Materials & Railings

Shaper

Catalog #	Type
Project	
Comments	Date
Prepared by	

SPECIFICATION FEATURES

Material
Painted, solid aluminum with a 1/8" matte white acrylic diffuser panel. 674-W features an open top and bottom with a recessed aluminum perf shield for interior applications. The 674-WP is rated for exterior applications.

Finishes
ALP (Aluminum Paint)
MW (Matte White)
MB (Matte Black)
GRM (Graphite Metallic)
DP (Dark Platinum)
BM (Bronze Metallic)
CC (Custom Color - Specify)

For Custom Color contact factory for quotation.

LED
31" L3-2000 nominal lumens at max 19W
43" L4-3000 nominal lumens at max 29W
55" L5-4000 nominal lumens at max 38W

Driver
LED system coupled with electronic driver to deliver optimal performance. Electronic drivers are available for 120-277V applications. A 0-10V dimming control is available (standard) on all models.

Installation
Supplied with a universal circular strap for a standard 4" J-box or plaster ring.

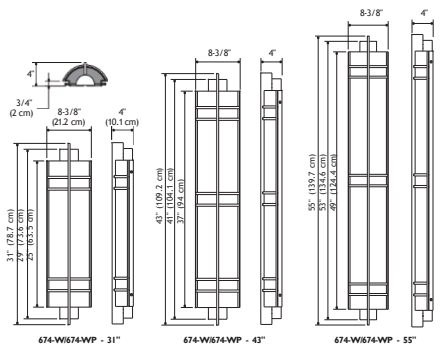
Options
RBP-Remote Emergency Battery Pack (5' Max Distance).

Compliance
674-W is U.L. and C.U.L approved for indoor and damp location. ADA compliant. 674-WP is U.L. and C.U.L listed for wet location.



**674-W Series
674-WP Series**

DIMENSIONS



31"
Lumen Output Source Lumens: L3-2000 nominal lumens
Wattage: 20W
Color Rendering: CRI 83+
Correlated Color Temperature: 4000K, 3500K, 3000K, 2700K
Rated Life of Lamp (hrs): 50,000
Dimming: 0-10V
Warranty: Warranty: 5 year limited

43"
Lumen Output Source Lumens: L4-3000 nominal lumens
Wattage: 29W
Color Rendering: CRI 83+
Correlated Color Temperature: 4000K, 3500K, 3000K, 2700K
Rated Life of Lamp (hrs): 50,000
Dimming: 0-10V
Warranty: Warranty: 5 year limited

55"
Lumen Output Source Lumens: L5-4000 nominal lumens
Wattage: 38W
Color Rendering: CRI 83+
Correlated Color Temperature: 4000K, 3500K, 3000K, 2700K
Rated Life of Lamp (hrs): 50,000
Dimming: 0-10V
Warranty: Warranty: 5 year limited

ORDERING INFORMATION (SELECT FIXTURE AND FABRIC KIT TO COMPLETE SPECIFICATION)

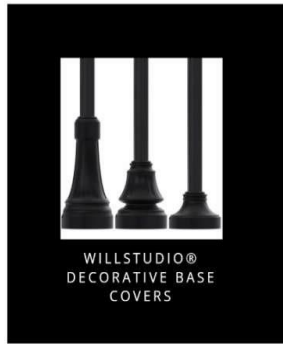
Sample Number: 67455-WL5827-LNN-MW8BP

Series	Size	Mounting Type	LED Lamp			LED Voltage	Finish	Options
			31"	43"	55"			
6M = Luminous Wall Sconce	31 = 31"	W = Interior Wall	137	148	158	UNV = (120/277V)	ALP = Aluminum Paint MW = Matte White MB = Matte Black DP = Dark Platinum GRM = Graphite Metallic BM = Bronze Metallic CC = Custom Color-Contact factory for quotation	RBP = Remote Battery Pack (5' Max Distance)
	43 = 43"	WP = Exterior Wall	827	87	87			
	55 = 55"		137	148	158			
			880	30	30			
			137	148	158			
			885	35	35			
			137	148	158			
			890	40	40			

Cooper Lighting Solutions
3824 East Colfax Avenue
Austin, TX 78701
P: 1-800-360-1317
www.cooperlighting.com

Specifications and dimensions subject to change without notice. See additional information on the following pages.

PSS25085E) 06-03-19 1 of 1



[PART#] WP-RSAA-14-4040-D-AB-SB-FP-BK
[DESCRIPTION] 14' Tall x 4.0" OD x 0.188" Wall Thickness, Round Straight Aluminum, Anchor Base Light Pole, Wiring Hand Hole & Cover, Standard Fixture Mounting & Finish Color, USA Engineered & Manufactured (Standard Base Includes 3/4" Anchor Bolts)

[PART#] WP-CL3-4R
[DESCRIPTION] WILLstudio® Large Decorative Clamshell Base Cover for 4" OD Round Light Pole

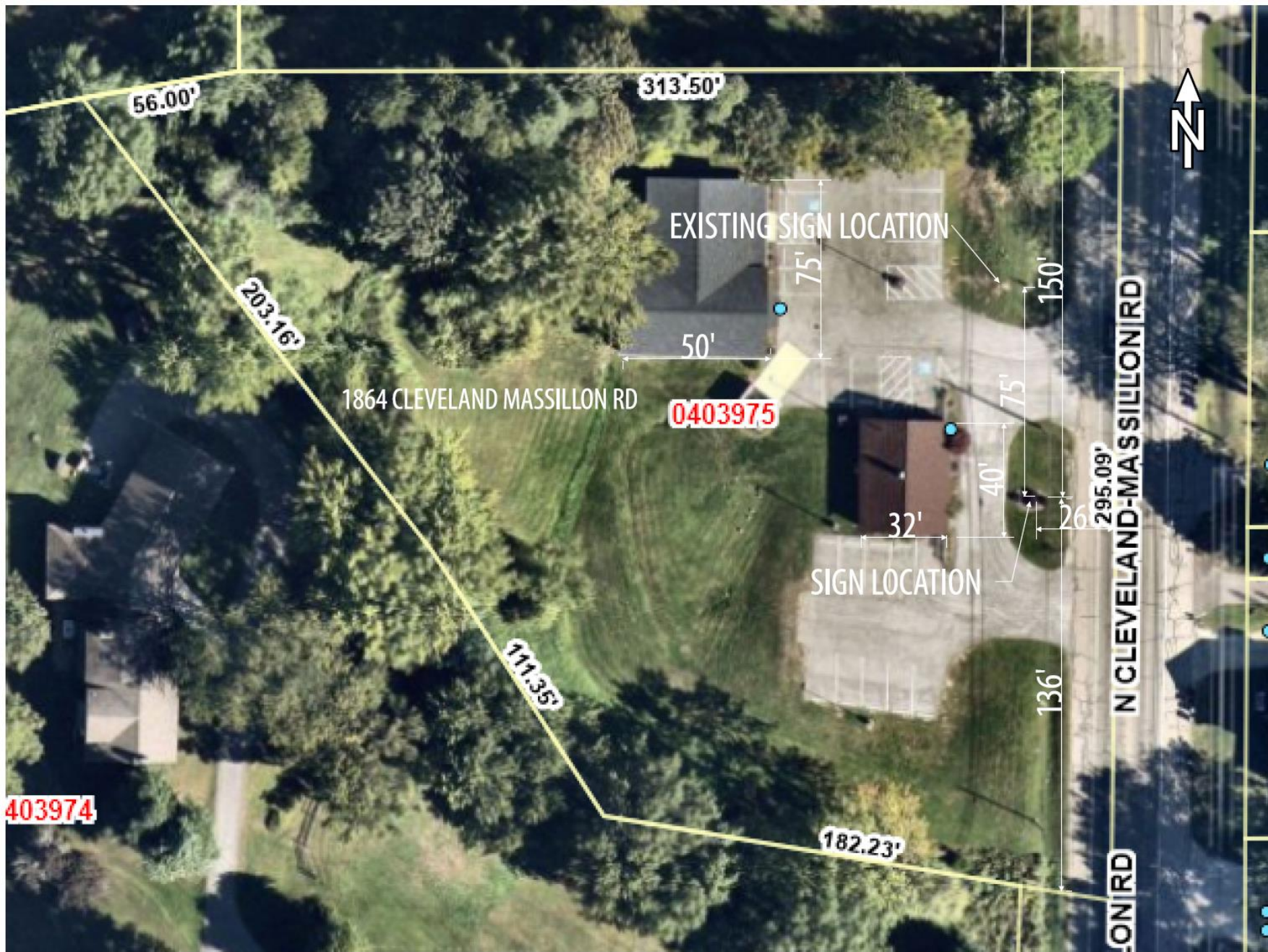
[PART#] WP-SS2-35E
[DESCRIPTION] 2@180 Side Shepherds Hook, 3.5" OD Pole/Tenon (External Fit), USA Made

[PART#] WD-MVX-80-30-MV-5W-PM-BK
[DESCRIPTION] 80W, WILLstudio® MVX Decorative Coach LED Light Fixture, 12000+ Lumens, 3000K, 120-277V Input VAC, Type 5 Wide Distribution, Pendant Mount

PROPOSED HARDIE SIDING MATERIALS AND COLORS

- HORIZONTAL SIDING - MAIN FIELD COLOR -
- HORIZONTAL SIDING - ACCENT AREA COLOR -
- HORIZONTAL SIDING - SIDE BASE COLOR & MISC ACCENTS -
- VERTICAL BATTEN BOARD PANEL COLOR -
- ACCENT PANEL AREAS & TRIM AREAS -
- WINDOW TRIM & SOFFIT/FASCIA AREAS -

- IRON GRAY
- PEARL GRAY
- MIDNIGHT BLACK
- PEARL GRAY
- MIDNIGHT BLACK



PARCEL MAP
FROM
SUMMIT COUNTY
GIS

SIGN SETBACKS
150' TO NORTH LOT LINE
140' TO SOUTH LOT LINE
26 FEET TO RIGHT OF WAN

BECKER SIGNS

WE'LL GET YOU NOTICED

330 659 4504 | BECKERSIGNS.COM

ALL ARTWORK AND DRAWINGS ARE PROPERTY OF BECKER SIGNS INC. ANY USE OTHER THAN VIEWING FOR CUSTOMER APPROVAL OR PERMIT APPLICATION IS PROHIBITED UNLESS SPECIFICALLY ALLOWED IN WRITING BY BECKER SIGNS INC. COST OF ART DEVELOPMENT MUST BE PAID TO BECKER SIGNS INC. PRIOR TO ANY OTHER USE.

PROJECT	ARCADIAN DETAIL SUPPLY 1864 CLEVELAND MASSILLON ROAD, BATH	DRAWN BY	BDB
DWG	0403975 SITE	REV	
		DATE	09/17/25

BECKER SIGNS INC.
6381 CHITTENDEN ROAD, E9
HUDSON, OH 44236
330-659-4504
BECKERSIGNS.COM



**2-SIDED 60" WIDE X 33" TALL SIGN PANEL MOUNTED IN WHITE VINYL FRAME
VINYL FRAME POSTS ARE BURIED 36" IN GROUND AND CONCRETED
SIGN PANEL IS MATTE-LAMINATED DIGITAL PRINTS MOUNTED TO 1/4" ACM
SIGN IS INSTALLED IN EXISTING LANDSCAPED AREA.**

13.75 S.F.



EXISTING LANDSCAPING, CENTER SHRUB TO BE REMOVED



EXISTING SIGN ON PROPERTY

BECKER SIGNS

WE'LL GET YOU NOTICED

330 659 4504 | BECKERSIGNS.COM

ALL ARTWORK AND DRAWINGS ARE PROPERTY OF BECKER SIGNS INC. ANY USE OTHER THAN VIEWING FOR CUSTOMER APPROVAL OR PERMIT APPLICATION IS PROHIBITED UNLESS SPECIFICALLY ALLOWED IN WRITING BY BECKER SIGNS INC. COST OF ART DEVELOPMENT MUST BE PAID TO BECKER SIGNS INC. PRIOR TO ANY OTHER USE.

PROJECT
ARCADIAN DETAIL SUPPLY
1864 CLEVELAND MASSILLON ROAD, BATH

DWG
PROPERTY PERSPECTIVE

DRAWN BY BDB
REV
DATE 9/17/25

BECKER SIGNS INC.
6381 CHITTENDEN ROAD, E9
HUDSON, OH 44236
330-659-4504
BECKERSIGNS.COM

APPEARANCE REVIEW COMMISSION

